

Glass Partition Guide:

Please use this guide to assist you with assessing your partitions and glass wall requirements. Shown on the following pages are:

Partition modules (pages 2 – 4)

These pages show the different elevations available for the different partition types. These are useful to help you decide on the type of partition you need and how you would like it to look.

If possible please mark your drawing with the details of the modules so we have a clear idea of what you are looking for when we price up your requirements.

Create your layout here (page 5)

Print this page (multiple times if you like) and draw on your layout for the partitions that you would like us to look at for you. Mark up these pages with the dimensions and show any other points worth considering as shown in the following pages.

Sample Layout (page 6)

A sample of the things worth noting on the drawing of your requirements.

Information / things to be aware of (page 7)

Here you will find help with dimensions, and notes on other points worth considering, well worth reading prior to creating your layout.

Guide to the Silicon Glazed Partition types:

SILICON GLAZED MODULES AND DOORS



SOLID



DOOR

Above shows the different modules available for the Silicon Glazed partitions, these can be various widths but in general base your measurement on each module being 1,200mm max.

Door modules are 900mm as standard.

Guide to the Single Glazed Partition types:

SINGLE GLAZED MODULES



SOLID



BORROWED
LIGHT



HALF GLAZED



SOLID GLAZED
SOLID



FULL HEIGHT
GLAZED



DOOR HEAD
GLAZED

SINGLE DOOR (AVAILABLE IN 838 AND 926mm PART M COMPLIANT) WIDE OPTIONS



SOLID ABOVE



GLAZED ABOVE

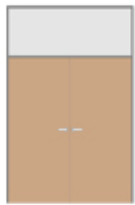


SOLID ABOVE
WITH VP

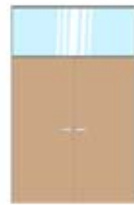


GLAZED ABOVE
WITH VP

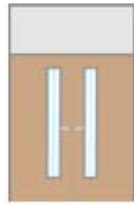
DOUBLE DOOR OPTIONS



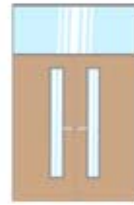
SOLID ABOVE



GLAZED ABOVE



SOLID ABOVE
WITH VP's



GLAZED ABOVE
WITH VP's

VP – is short for Vision Panel in the door

Above shows the different modules available for the Single Glazed partitions, these can be various widths but in general base your measurement on each module being 1,200mm max.

Door modules are 900mm as standard.

Guide to the Double Glazed Partition types:

SINGLE GLAZED MODULES



SOLID



BORROWED
LIGHT



HALF GLAZED



SOLID GLAZED
SOLID



FULL HEIGHT
GLAZED



DOOR HEAD
GLAZED

SINGLE DOOR (AVAILABLE IN 838 AND 926mm PART M COMPLIANT) WIDE OPTIONS



SOLID ABOVE



GLAZED ABOVE

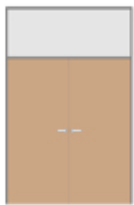


SOLID ABOVE
WITH VP

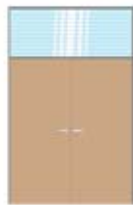


GLAZED ABOVE
WITH VP

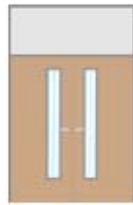
DOUBLE DOOR OPTIONS



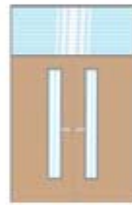
SOLID ABOVE



GLAZED ABOVE



SOLID ABOVE
WITH VP's



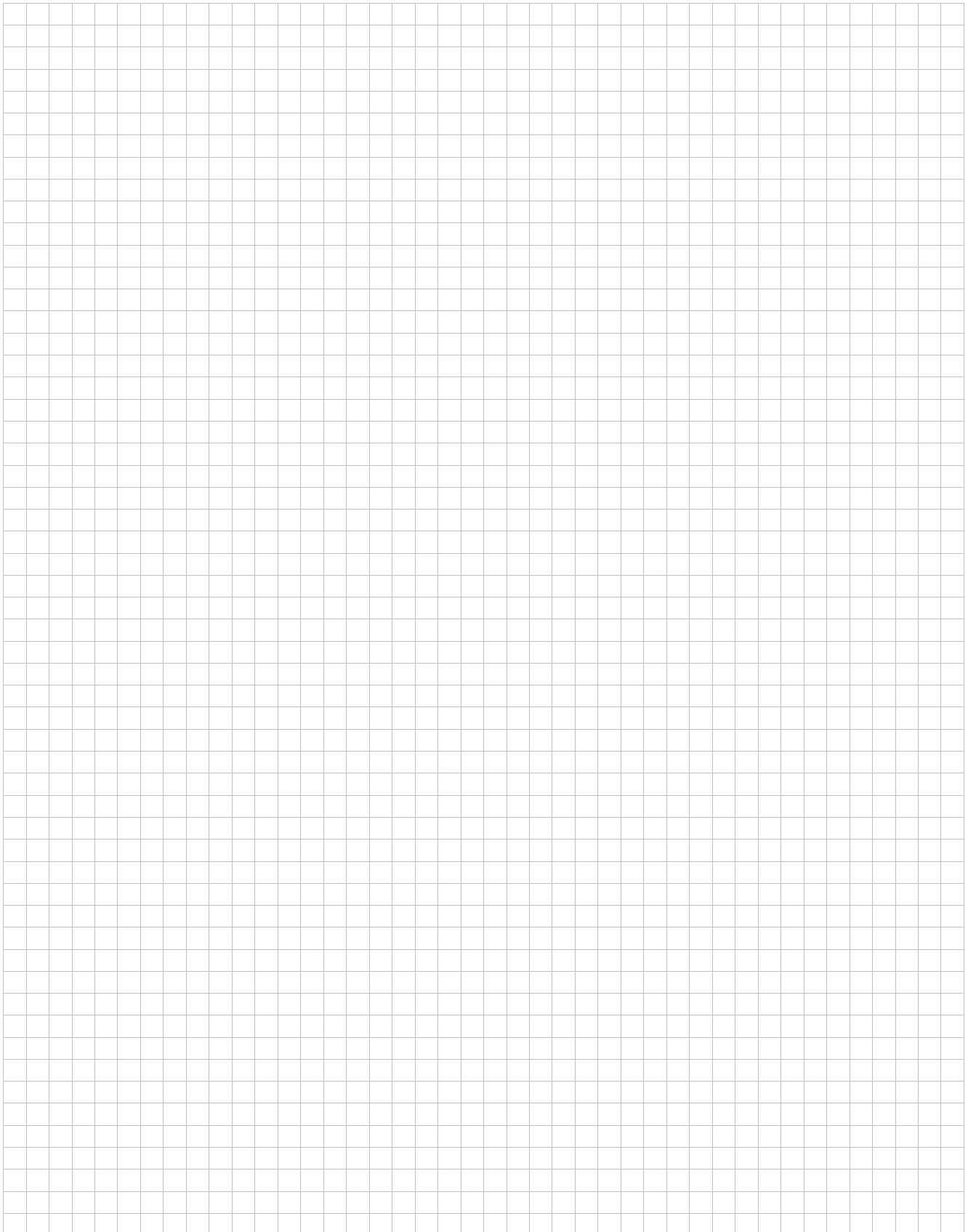
GLAZED ABOVE
WITH VP's

VP – is short for Vision Panel in the door

Above shows the different modules available for the Double Glazed partitions, these can be various widths but in general base your measurement on each module being 1,200mm max.

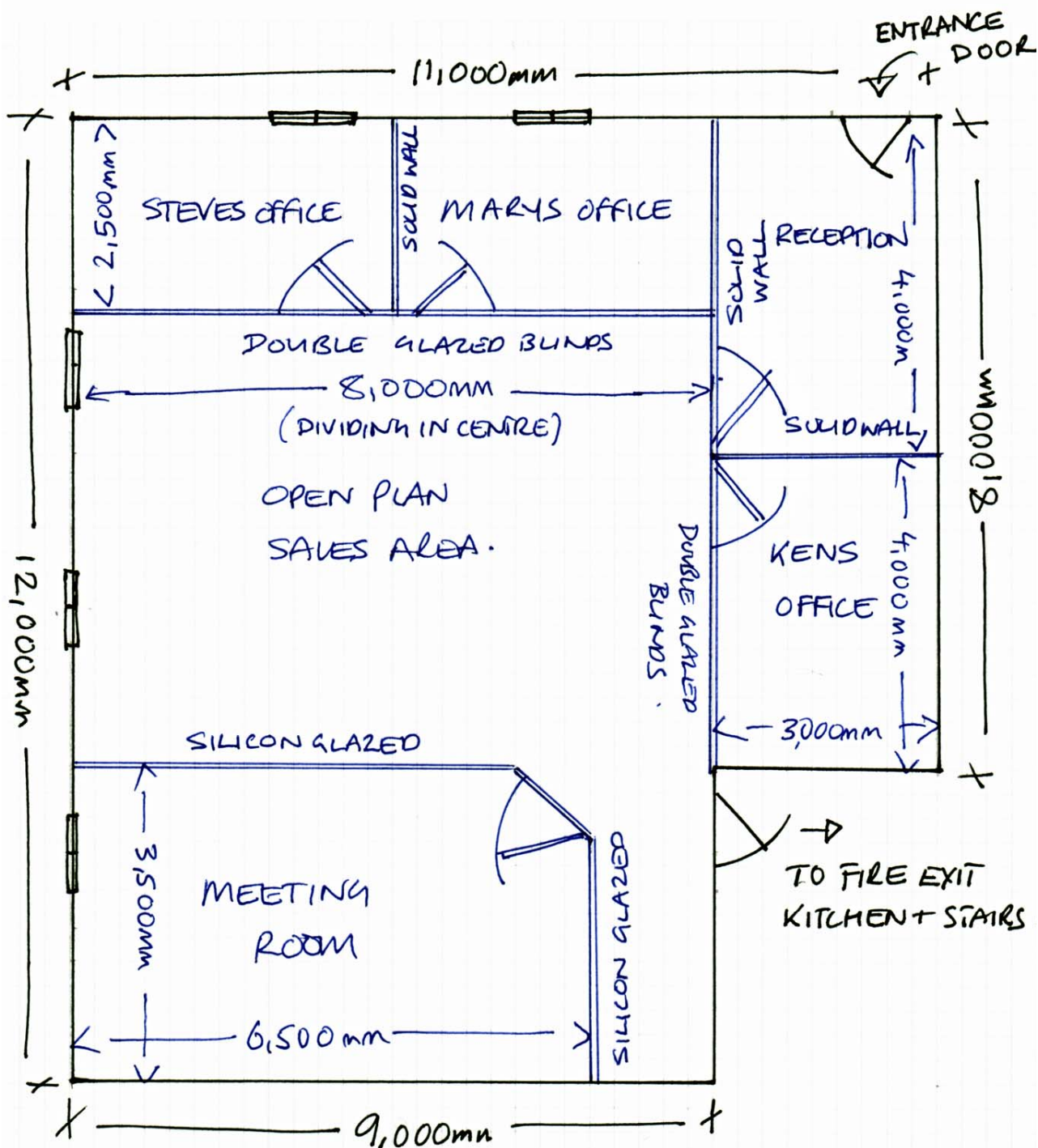
Door modules are 900mm as standard.

Create your layout here – Fax back to us on 01522 680404:



For tips and advice on drawing your layout please see the next page

Sample layout:



- OAK DOORS
- SILVER METALWORK
- BLACK BLINDS -

CEILING HEIGHT =
2,450mm

Information / things to be aware of when measuring:

Dimensions:

Where possible please mark down all dimensions in mm, to help you with this the conversions are shown below:

- To convert inches to mm x 25.4 – e.g. 1 inch = 25.4mm
- To convert feet to mm x 304.8 – e.g. 1 foot = 304.8mm

Things to show on you drawing:

- Ceiling heights – very important to allow us to prepare you a quote
- Ceiling light positions – do the proposed partitions fall in line with ceiling or wall mounted light or air conditioning fittings?
- Trunking – is there dado or skirting trunking on the walls?
- Power and data points – do they fall into the right rooms after the partitions have been installed?
- Windows – we are able to place partitions down the centre of a window, it is best if it falls on one of the mullions - please let us know the width of the mullion

Other points to consider:

If you could also provide us with information on the following it would help us to quote for your partitions more accurately:

- Installation level (e.g. ground floor, first floor etc.)
- Is there a lift to assist with moving materials?
- Is the area clear with good access from the entrance etc.?
- Do you have offloading facilities on site (e.g. fork lift truck etc.)
- Do you have a skip or a facility to take the waste materials?